

CORRECTION

Open Access



Correction: PReventing and Approaching Crises for frail community-dwelling patients Through Innovative Care (PRACTIC): protocol for an effectiveness cluster randomised controlled trial

Anette Væringstad^{1,2*}, Ellen Thea Gjelseth Dalbak^{1,2}, Daniela Holle³, Janne Myhre^{1,4}, Øyvind Kirkevold^{1,2,5}, Sverre Bergh^{1,5} and Bjørn Lichtwarck¹

Correction: *Trials* 25, 304 (2024)

<https://doi.org/10.1186/s13063-024-08117-6>

Following the publication of the original article [1], we have been notified that Figure 1 was incomplete.

The original article can be found online at <https://doi.org/10.1186/s13063-024-08117-6>.

*Correspondence:

Anette Væringstad

anette.vaeringstad@sykehuset-innlandet.no

¹ The Research Centre for Age-Related Functional Decline and Disease, Innlandet Hospital Trust, Ottestad, Norway

² Department of Health, Care and Nursing, Faculty of Medicine NTNU, Norwegian University of Science and Technology, Gjøvik, Norway

³ Department of Nursing Science, University of Applied Sciences (HS Gesundheit), Bochum, Germany

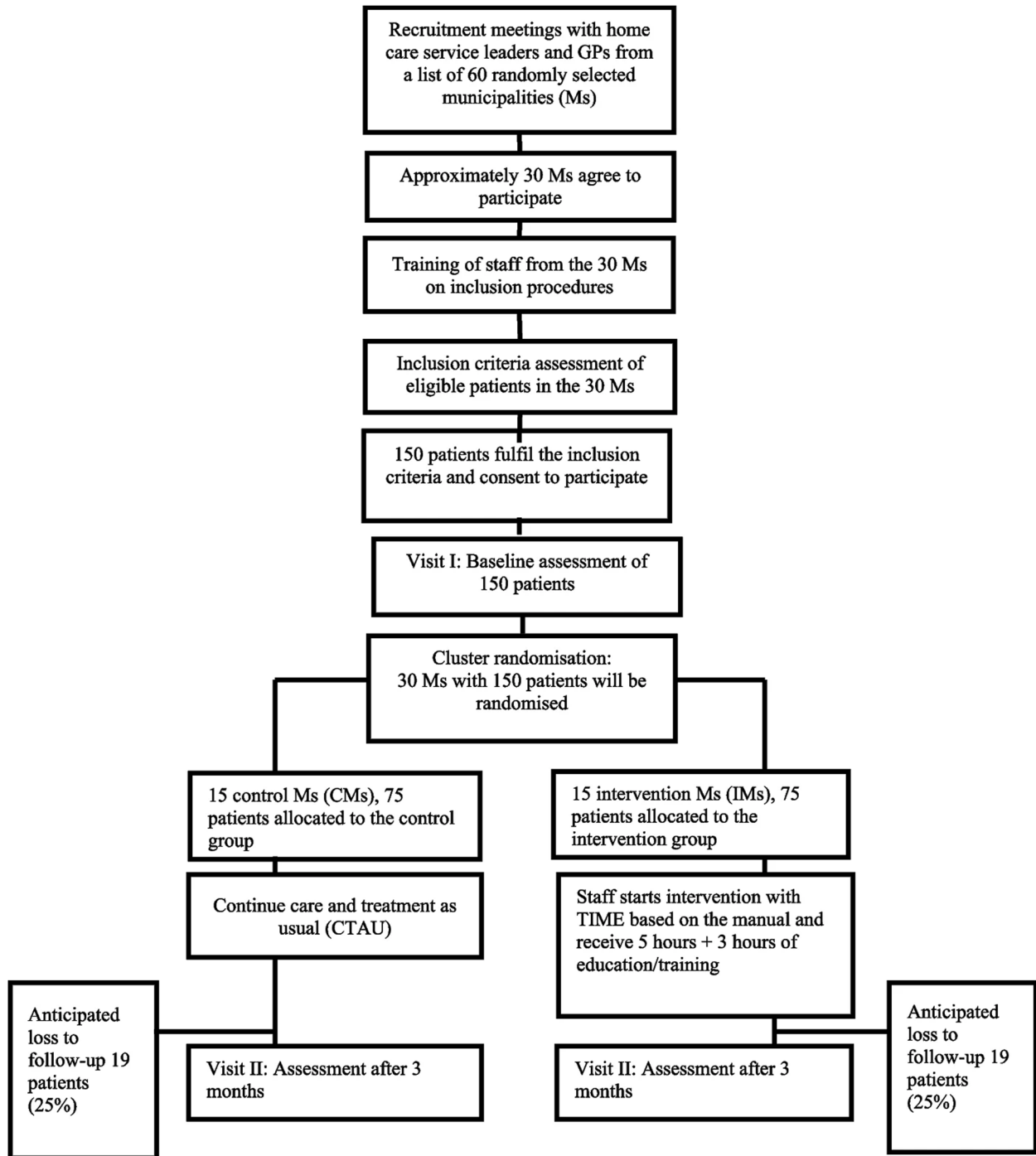
⁴ Faculty of Social and Health Sciences, Inland Norway University of Applied Sciences (INN University), Elverum, Norway

⁵ The Norwegian National Centre for Ageing and Health, Vestfold Hospital Trust, Vestfold, Norway



© The Author(s) 2024. **Open Access** This article is licensed under a Creative Commons Attribution 4.0 International License, which permits use, sharing, adaptation, distribution and reproduction in any medium or format, as long as you give appropriate credit to the original author(s) and the source, provide a link to the Creative Commons licence, and indicate if changes were made. The images or other third party material in this article are included in the article's Creative Commons licence, unless indicated otherwise in a credit line to the material. If material is not included in the article's Creative Commons licence and your intended use is not permitted by statutory regulation or exceeds the permitted use, you will need to obtain permission directly from the copyright holder. To view a copy of this licence, visit <http://creativecommons.org/licenses/by/4.0/>. The Creative Commons Public Domain Dedication waiver (<http://creativecommons.org/publicdomain/zero/1.0/>) applies to the data made available in this article, unless otherwise stated in a credit line to the data.

Originally published Figure 1:



Corrected Figure 1:

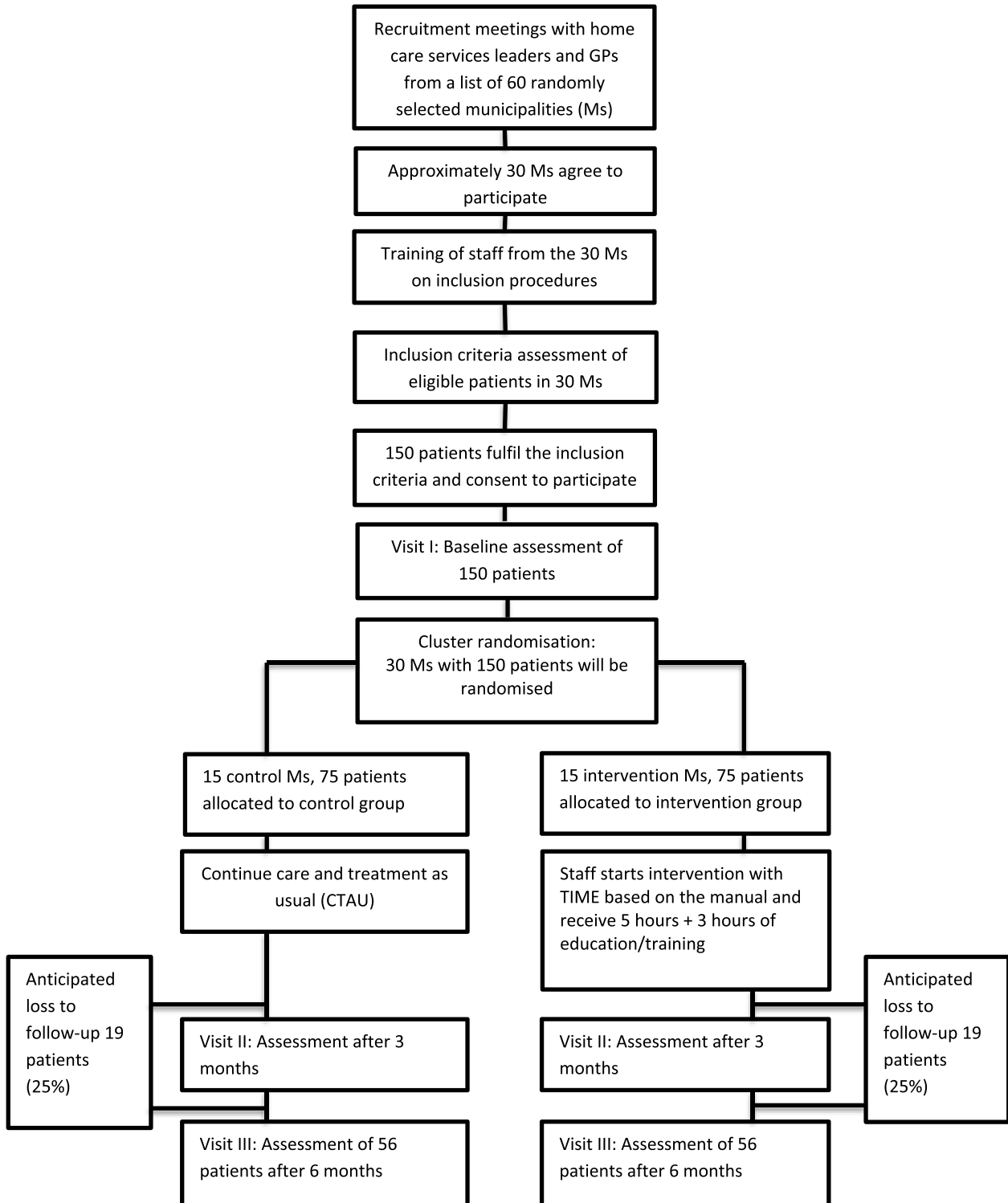


Fig. 1 The PRACTIC trial: Flowchart of the clusters and patients throughout the phases of the trial

The original article has been corrected.

Published online: 27 June 2024

Reference

1. Væringstad, et al. PReventing and Approaching Crises for frail community-dwelling patients Through Innovative Care (PRACTIC): protocol for an effectiveness cluster randomised controlled trial. *Trials*. 2024;25:304. <https://doi.org/10.1186/s13063-024-08117-6>.