

CORRECTION

Open Access



Correction: Enhancing educational and vocational recovery in adolescents and young adults with early psychosis through Supported Employment and Education (SEEarly): study protocol for a multicenter randomized controlled trial

D. Jäckel^{1,2†}, A. Willert^{1,2*†}, A. Brose², K. Leopold^{2,3}, D. Nischk⁴, S. Senner⁴, O. Pogarell⁵, S. Sachenbacher⁵, M. Lambert⁶, A. Rohenkohl⁶, P. Kling-Lourenco⁷, N. Rüsck⁷, F. Bempohl^{1,8}, M. Schouler-Ocak^{1,8}, V. Disselhof², U. Skorupa² and A. Bechdorf^{1,2}

Correction: BMC Trials 24, 440 (2023)

<https://doi.org/10.1186/s13063-023-07462-2>

Following publication of the original article [1], we have been informed that Fig. 1 was incomplete.

[†]D. Jäckel and A. Willert are shared first authors.

The original article can be found online at <https://doi.org/10.1186/s13063-023-07462-2>.

*Correspondence:

A. Willert
anna.willert@charite.de

¹ Department of Psychiatry and Psychotherapy, Charité Campus Mitte, Charité Universitätsmedizin Berlin, Berlin, Germany

² Department of Psychiatry, Psychotherapy and Psychosomatics, Vivantes Klinikum Am Urban and Vivantes Klinikum Im Friedrichshain, Berlin, Germany

³ Department of Psychiatry and Psychotherapy, University Hospital Carl Gustav Carus, Technical University Dresden, Dresden, Germany

⁴ Department of Social Psychiatry, Zentrum Für Psychiatrie, Reichenau, Germany

⁵ Department of Psychiatry and Psychother- Apy, University Hospital, LMU Munich, Munich, Germany

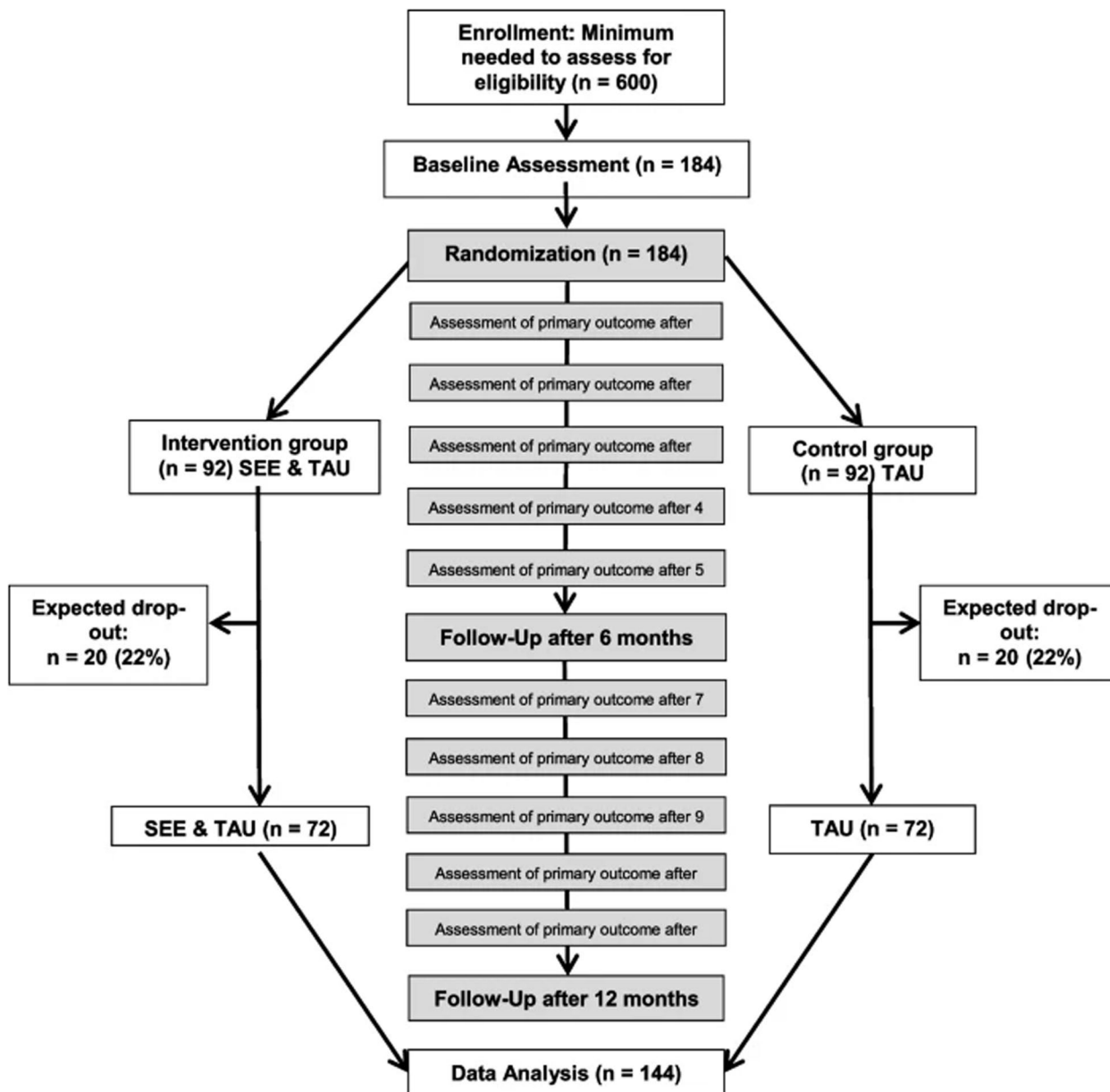
⁶ Department of Psy- Chiatry and Psychotherapy, University Medical Center Hamburg-Eppendorf, Hamburg, Germany

⁷ Department of Psychiatry II, University of Ulm and BKH Günzburg, Ulm, Germany

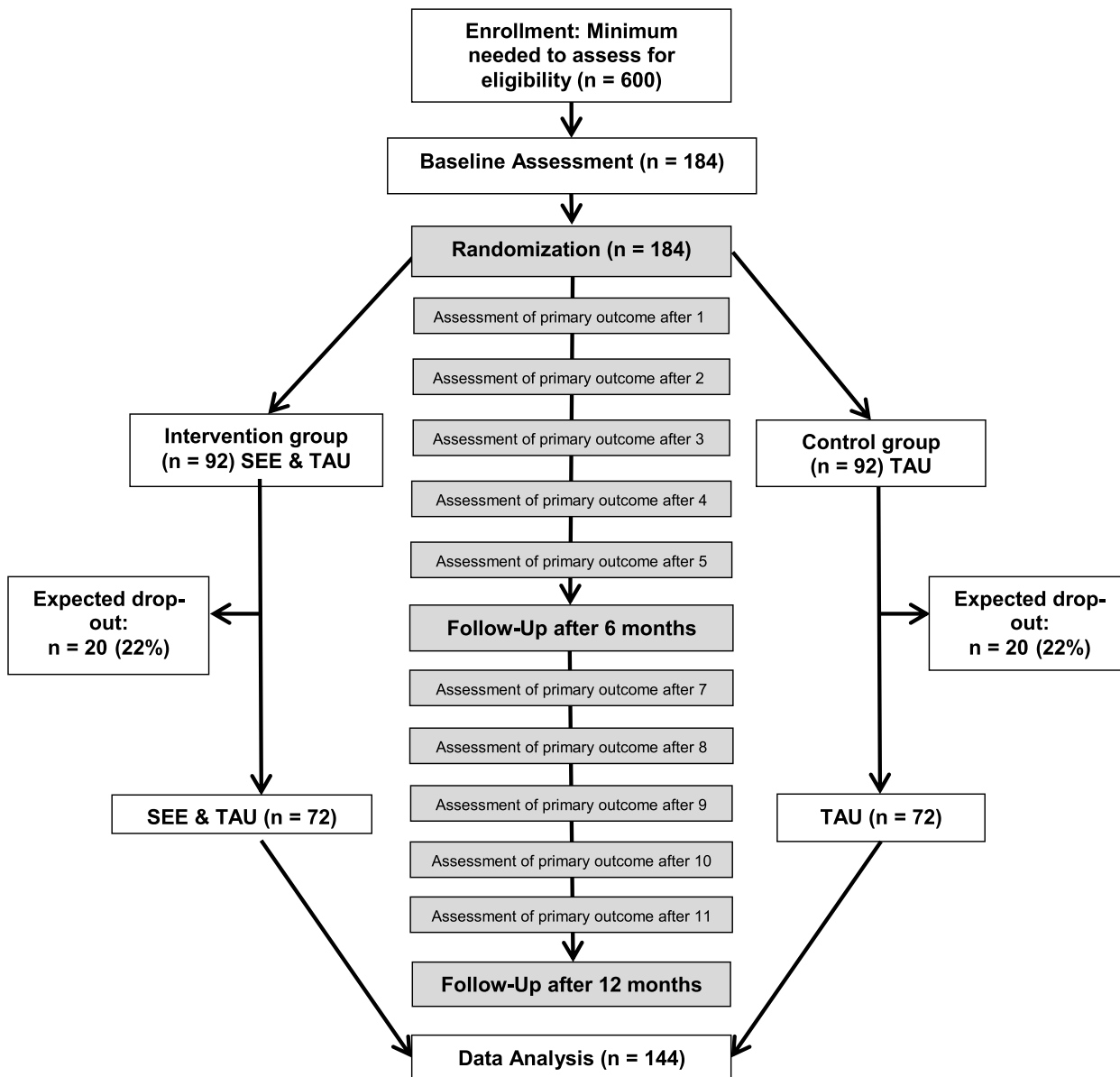
⁸ Psychiatric University Clinic of Charité at St. Hedwig Hospital, Berlin, Germany



Originally published Fig. 1:



Corrected Fig. 1:



The original article has been corrected.

Published online: 25 July 2023

Reference

1. Jäckel, et al. Enhancing educational and vocational recovery in adolescents and young adults with early psychosis through Supported Employment and Education (SEEarly): study protocol for a multicenter randomized controlled trial. *BMC Trials*. 2023;24:440. <https://doi.org/10.1186/s13063-023-07462-2>.