


METHODOLOGY

Open Access



Statistical analysis plan for the replacing protein via enteral nutrition in a stepwise approach in critically ill patients (REPLENISH) randomized clinical trial

Yaseen M Arabi^{1*} , Hasan M. Al-Dorzi¹, Omar Aldibaasi², Musharaf Sadat¹, Jesna Jose², Dina Muharib³, Haifa Algethamy⁴, Abdulrahman A. Al-Fares⁵, Fahad Al-Hameed⁶, Ahmed Mady^{3,7}, Ayman Kharaba⁸, Ali Al Bshabshe⁹, Khalid Maghrabi¹⁰, Khalid AlGhamdi¹¹, Ghulam Rasool⁷, Adnan AlGhamdi¹², Ghaleb. A Almekhlafi^{12,13}, Jamal Chalabi¹⁴, Haifaa Ibrahim AlHumedi¹, Maram Hasan Sakkijha¹, Norah Khalid Alamrey¹, Amjad Sami Alaskar¹, Rabeah Hamad Alhutail¹², Kaouthar Sifaoui⁸, Rakan Alqahtani¹⁵, Ahmad S. Qureshi¹⁶, Mohammed Moneer Hejazi¹, Hatim Arishi¹, Samah AlQahtani¹, Amro Mohamed Ghazi¹, Saleh T. Baaziz⁴, Abeer Othman Azhar⁴, Sara Fahad Alabbas⁴, Mohammed AlAqeely³, Ohoud AlOrabi⁶, Aliaa Al-Mutawa⁵, Maha AlOtaibi³, Madiha Fawazy Elghannam¹¹, Mohammed Almaani¹⁷, Sarah Fadel Buabbas¹⁸, Wadiyah Alawi M. Alfilfil¹⁹, Mohammed S. Alshahrani²⁰, Joel Starkopf²¹, Jean-Charles Preiser²², Anders Perner²³, Jumana Hani AlMubarak¹⁸, Wafa Mansoor Hazem¹⁹, Talal Albrahim²⁰, Abdulaziz Al-Dawood¹ and the Saudi Critical Care Trials Group

Abstract

Background The optimal amount and timing of protein intake in critically ill patients are unknown. REPLENISH (Replacing Protein via Enteral Nutrition in a Stepwise Approach in Critically Ill Patients) trial evaluates whether supplemental enteral protein added to standard enteral nutrition to achieve a high amount of enteral protein given from ICU day five until ICU discharge or ICU day 90 as compared to no supplemental enteral protein to achieve a moderate amount of enteral protein would reduce all-cause 90-day mortality in adult critically ill mechanically ventilated patients.

Methods In this multicenter randomized trial, critically ill patients will be randomized to receive supplemental enteral protein (1.2 g/kg/day) added to standard enteral nutrition to achieve a high amount of enteral protein (range of 2–2.4 g/kg/day) or no supplemental enteral protein to achieve a moderate amount of enteral protein (0.8–1.2 g/kg/day). The primary outcome is 90-day all-cause mortality; other outcomes include functional and health-related quality-of-life assessments at 90 days. The study sample size of 2502 patients will have 80% power to detect a 5% absolute risk reduction in 90-day mortality from 30 to 25%. Consistent with international guidelines, this statistical analysis plan specifies the methods for evaluating primary and secondary outcomes and subgroups. Applying this statistical analysis plan to the REPLENISH trial will facilitate unbiased analyses of clinical data.

*Correspondence:

Yaseen M Arabi
arabi@ngha.med.sa

Full list of author information is available at the end of the article



© The Author(s) 2024. **Open Access** This article is licensed under a Creative Commons Attribution 4.0 International License, which permits use, sharing, adaptation, distribution and reproduction in any medium or format, as long as you give appropriate credit to the original author(s) and the source, provide a link to the Creative Commons licence, and indicate if changes were made. The images or other third party material in this article are included in the article's Creative Commons licence, unless indicated otherwise in a credit line to the material. If material is not included in the article's Creative Commons licence and your intended use is not permitted by statutory regulation or exceeds the permitted use, you will need to obtain permission directly from the copyright holder. To view a copy of this licence, visit <http://creativecommons.org/licenses/by/4.0/>. The Creative Commons Public Domain Dedication waiver (<http://creativecommons.org/publicdomain/zero/1.0/>) applies to the data made available in this article, unless otherwise stated in a credit line to the data.

Conclusion Ethics approval was obtained from the institutional review board, Ministry of National Guard Health Affairs, Riyadh, Saudi Arabia (RC19/414/R). Approvals were also obtained from the institutional review boards of each participating institution. Our findings will be disseminated in an international peer-reviewed journal and presented at relevant conferences and meetings.

Trial registration ClinicalTrials.gov, [NCT04475666](https://clinicaltrials.gov/ct2/show/study/NCT04475666). Registered on July 17, 2020.

Keywords Critical illness, Protein, Statistical analysis plan, Randomized clinical trial, Nutrition

Background

The optimal amount and timing of protein intake in critically ill patients are unknown. Based on the limited existing data, different clinical practice guidelines recommended a wide range of doses of proteins for critically ill patients, from 1.2 to 2.5 g/kg/day [1].

Given the uncertainty regarding the optimal dose of protein intake in critically ill patients [2–10] and the limited data from randomized clinical trials (RCTs), we are conducting the Replacing Protein via Enteral Nutrition in a Stepwise Approach in Critically Ill Patients (REPLENISH) trial. This trial is an open-label, multicenter RCT that evaluates whether supplemental enteral protein (1.2 g/kg/day) added to standard enteral nutrition to achieve a high amount of enteral protein (range 2–2.4 g/kg/day) given from ICU day 5 until ICU discharge up to ICU day 90 as compared with no supplemental enteral protein to achieve a moderate amount of enteral protein (0.8–1.2 g/kg/day) will reduce all-cause 90-day mortality in adult critically ill patients.

This manuscript describes the statistical analysis plan (SAP) for the REPLENISH trial, in compliance with the “Statistical Principles for Clinical Trials E9” report and “Structure and Content of Clinical Study Report E3” [11, 12]. This statistical analysis plan identifies the procedures to be applied to the primary and secondary analyses once trial data validation is complete. All analyses were prospectively defined, and the SAP was finalized by the Principal Investigator and the Steering Committee members before the final analysis. Participant recruitment is expected to be completed in April 2025. The final study report will follow the Consolidated Standards of Reporting Trials (CONSORT) 2010 guidelines for reporting RCTs [13, 14].

Methods

Study design

The REPLENISH trial is an open-label, parallel-group, multicenter superiority RCT currently enrolling patients from 17 hospitals in 2 countries. The study will be conducted according to the principles of the latest version of Good Clinical Practice and in accordance

with all relevant local ethical, regulatory, and legal requirements. In Saudi Arabia, the trial is approved by the Institutional Review Board (IRB) of Ministry of National Guard Health Affairs, Riyadh, Saudi Arabia (Protocol number RC19/414R). In other sites, the study has been approved by their respective IRBs. The trial is registered in ClinicalTrials.gov (NCT04475666), and the study protocol has been previously published [15].

According to local regulations, the patients will be consented through their surrogate decision-maker. Some sites have approval for using a deferred consent model in case the consent was not taken a priori. Medical, surgical, and trauma ICU patients will be screened on day 4 of ICU stay up to the morning of day 5. Adult mechanically ventilated patients (≥ 18 years old) on enteral nutrition who are unlikely to be discharged from the ICU on the following day will be included in the study. Exclusion criteria have been described in a previously published protocol [15]. Eligible patients will be randomized to the supplemental protein group (2–2.4 g/kg/day) or the control group (0.8–1.2 g/kg/day). Protein requirement will be calculated based on actual body weight for patients with a body mass index (BMI) < 30 kg/m². For patients with a BMI ≥ 30 kg/m², we will calculate the adjusted body weight as follows: adjusted body weight (in kg) = ideal body weight + 0.4 * (actual weight – ideal body weight). The ideal body weight will be calculated as follows: for men: $50 + (0.91 \times [\text{height in centimeters} - 152.4])$ and for women: $45.5 + (0.91 \times [\text{height in centimeters} - 152.4])$. Randomization is achieved through a secure web-based randomization system using permuted variable undisclosed block sizes. Randomization is stratified according to the trial site, the use of renal replacement therapy at the time of randomization and whether the patient is a suspected or confirmed case of COVID-19. The study intervention starts from ICU day 5 (mid-night) and is continued till meeting any of the following criteria: death, ICU discharge or day 90 in ICU, premature stopping of feeding due to brain death or palliative care plan, or initiation and tolerance of full oral feeding for more than 24 h, whichever comes first. Patients are followed up daily until day 90 if in the ICU or until ICU discharge and then at day 90.

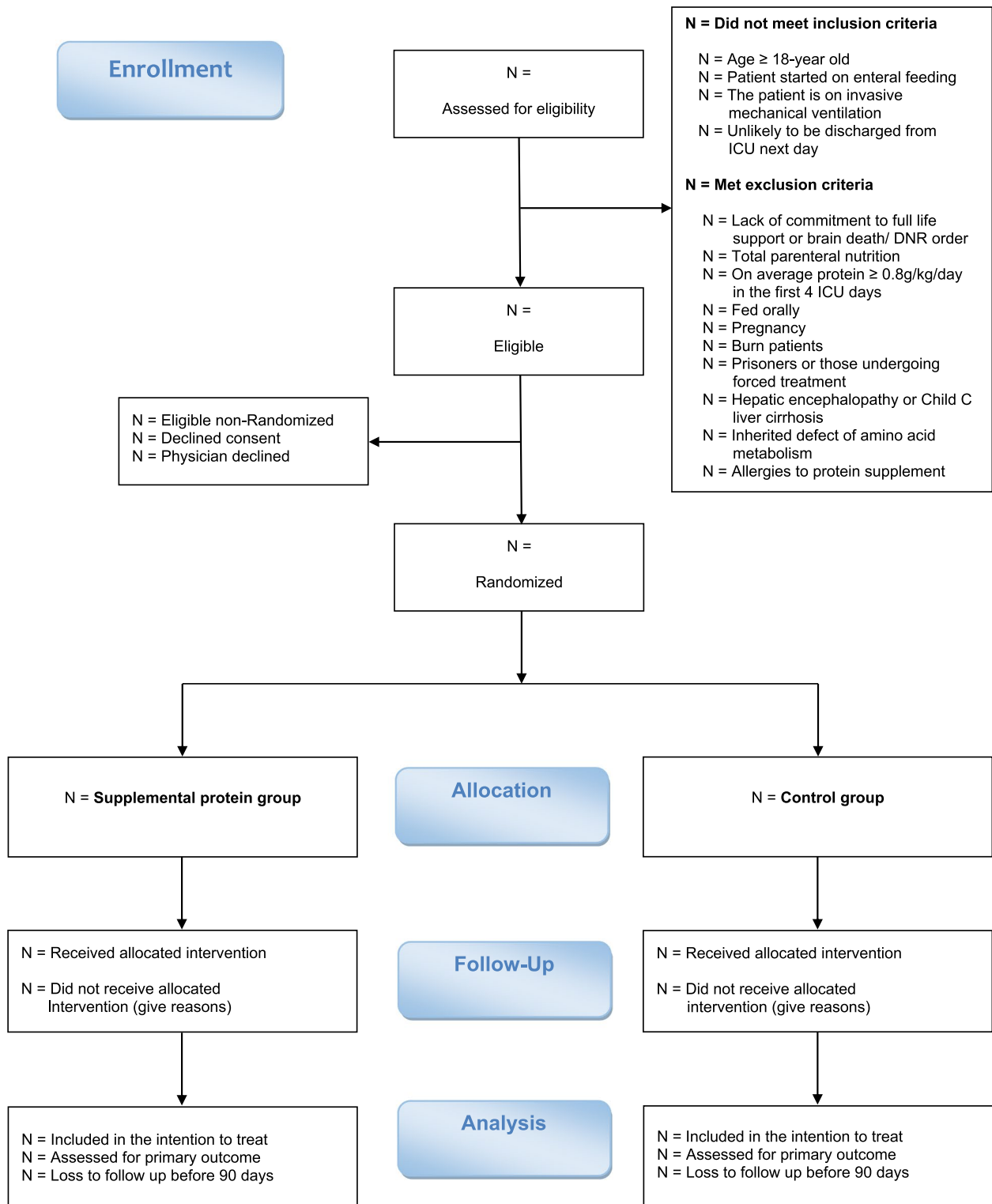


Fig. 1 Consort flow diagram

Study population

The flow of patients through the study will be displayed in a CONSORT diagram (Fig. 1). We will report the number of patients screened, met inclusion or exclusion criteria, were enrolled, and were eligible but not enrolled. Reasons for the exclusion of non-included patients will be reported. We will also report the number of patients who were randomized to each group, received the allocated interventions, and had the primary outcome data.

The primary analyses will be performed on the modified intention-to-treat population of all enrolled patients, whether or not they received the allocated interventions. Post-enrollment exclusion from the modified intention-to-treat population will be limited to the cessation of study procedures due to withdrawal of consent. The data of these patients would only remain in the analyzed dataset if the patient or surrogate decision-maker consented to use trial data. Patients will also be excluded post-enrollment from the modified intention-to-treat population if the eligibility criteria were found not to have been met and study interventions were not started [16]. Censoring dates will only occur in case of “real” loss to follow-up (i.e., discharged patients with no information beyond some point). In that case, the censoring date will be the last day of contact or the date of hospital discharge if no other information is available.

Data

Baseline characteristics

We will present baseline age, sex, admission category (medical, postoperative (non-trauma) and trauma (postoperative and non-operative)), Acute Physiology and Chronic Health

Evaluation (APACHE) II score, and chronic health points (defined as per the APACHE II system) [17]. Baseline data (pre-randomization ICU day 4) will include morning blood glucose, sedatives and neuromuscular blockers infusions, and systemic corticosteroid use. The Sequential Organ Failure Assessment (SOFA) score will also be reported on day 4. We will also present the pre-morbid functional assessment for sarcopenia using the SARC-F (Strength, Assistance with walking, Rising from a chair, Climbing stairs, and Falls) score [18] (Supplementary Appendix 1-Table 1).

Intervention and co-interventions

We will report the estimated and administered energy and protein requirements for each group. Energy intake will include energy from enteral nutrition (including protein in the primary formula) and intravenous dextrose, citrate, propofol, and parenteral nutrition (if any). We will report total energy without and with the energy from supplemental protein. Protein intake includes the protein from the primary formula in both groups, the supplemental protein in the supplemental protein group and parenteral protein (if any). Energy and protein will be reported as kcal/kg based on actual body weight for patients with a BMI < 30 kg/m² and adjusted body weight for those with a BMI ≥ 30 kg/m². To ensure that energy and protein intake data are collected for complete 24-h periods, nutrition data will not be included for the last day of intervention if the duration of intervention on that day is less than 24 h.

We will report daily blood glucose, serum creatinine, and urine output by group. We will compare serial

Table 1 Summary of the analysis plan

Variables	Test
Baseline characteristics	No statistical comparisons
Intervention and co-interventions	Chi-square, Fisher’s exact test, Mann–Whitney <i>U</i> test, <i>t</i> -test as applicable For serial values: generalized linear mixed effect models
Primary outcome	1. Primary analysis: generalized mixed effects model with adjustment to stratification variables. Reporting of risk difference and relative risk 2. Secondary analyses: a. Chi-square or Fisher’s exact test b. Sensitivity analyses using generalized mixed effects model with adjustment to stratification variables and multiple imputations c. Cox proportional analysis d. Adjusted Cox proportional analysis e. Kaplan–Meier curves
Secondary outcomes	1. Categorical variables: generalized mixed effects model with adjustment to stratification variables. Reporting of risk difference and relative risk 2. Continuous variables: linear regression model and van Elteren test as appropriate. The results will be reported as medians and mean differences and beta coefficients with 95% CI. For HRQoL: sensitivity analysis using multiple imputations 3. Multiplicity adjustment by false discovery rate (FDR)
Safety outcomes	Generalized mixed effects model with adjustment to stratification variables and reporting of risk difference and relative risk.
Subgroup analyses	Generalized mixed effects model with adjustment to stratification variables and reporting of risk difference, relative risk, tests of interaction and FDR.

weights and the highest mobility level during the ICU stay [19]. We will also compare serial prealbumin, albumin, ammonia, blood urea nitrogen, 24-h urine for urinary urea nitrogen, lowest potassium level, lowest magnesium level and lowest phosphate level as well as the levels of aspartate transaminase, alanine aminotransferase, and international normalized ratio. We will report the average daily insulin dose during the ICU stay. We will also report the use of corticosteroids and statins in the two groups during the study period (Supplementary Appendix 1-Table 2).

Study outcomes

Primary outcome Ninety-day all-cause mortality is defined as death by day 90 from the ICU admission date.

Secondary outcomes

- Days alive at day 90 without life support, which will be calculated as the total number of days alive and free of vasopressor use, invasive mechanical ventilation and renal replacement therapy within 90 days after randomization. As a supplementary analysis, we will report the components of this composite outcome: vasopressor-free days, invasive mechanical ventilation-free days, and renal replacement-free days. Patients who die during the 90-day follow-up will be assigned 0 free days.
- Days alive and out of the hospital at day 90 will be calculated as the number of days from alive hospital discharge to day 90. Patients who die during the 90-day follow-up will be assigned 0 free days.
- Bacteremia defined as positive blood cultures, excluding those considered contaminant organisms, until 2 days post ICU discharge.
- New or progression of skin sacral pressure ulcers in ICU (<http://www.npuap.org/resources/educational-and-clinical-resources/npuap-pressure-ulcer-stage-categories/>), using the definitions of the National Pressure Ulcer Advisory Panel, which include stage I: non-blanchable erythema, stage II: partial-thickness skin loss, stage III: full-thickness skin loss, and stage IV: full-thickness tissue loss.
- Functional assessment using SARC-F (strength, assistance with walking, rising from a chair, climbing stairs, and falls) score for sarcopenia [18] at day 90.
- EuroQoL 5-Dimension 5-Level (EQ-5D-5L) [20] index value and EQ visual analog scale (EQ-VAS) at day 90. The EQ-5D-5L has five dimensions (mobility, self-care, usual activities, pain or discomfort,

and anxiety/depression) with five levels of severity (no problems, slight problems, moderate problems, severe problems, extreme problems). A higher score indicates a worse condition [20]. The scores of each patient will be first converted into a single index value. The EQ-5D-5L index value will be calculated using the Kingdom of Saudi Arabia value sets if they become available at the time of analysis; otherwise, we will use the United States EQ-5D-5L value sets [21]. Patients who die by the 90-day follow-up will be assigned 0 values in both index value and EQ-VAS. Data will also be presented for survivors only.

- *Safety outcomes* are classified into major and minor safety outcomes.

Major safety outcomes include

- New episode of stage 2 or higher of acute kidney injury by KDIGO (Kidney Disease Improving Global Outcomes) criteria [22] after enrollment. This is defined as a new initiation of renal replacement therapy after randomization, an increase in creatinine by ≥ 2.0 -folds compared to the baseline creatinine (the lowest available value before randomization) or urine output < 0.5 ml/kg/h on any given day post-randomization.
- Newly confirmed pneumonia according to the modified CDC criteria [23].
- Grade IV acute gastrointestinal injury [24] including any bowel ischemia with necrosis, clinically important gastrointestinal bleeding, Ogilvie's syndrome, and abdominal compartment syndrome.

Minor safety outcomes include

- Feeding intolerance defined as vomiting or large gastric residual volume (≥ 500 ml/24 h) on a single calendar day.
- Diarrhea defined as having three or more loose or liquid stools per day with a stool weight > 200 – 250 g/day (or > 250 ml/day) [24].
- Refeeding syndrome defined as a fall in serum phosphate below 0.65 mmol/L within 72 h of starting nutritional support and the drop being > 0.16 mmol/L from a previously recorded reading during ICU stay [25, 26].

Statistical analysis plan

- General concepts:* Categorical variables will be reported as numbers and frequencies. Continuous variables will be reported as means and standard

deviations or medians and interquartile ranges, as judged appropriate by normality testing. Details of missing data (numbers and proportions) will be provided. Categorical variables will be compared using the Chi-square test. Continuous variables will be compared using the Student's *t*-test or the Wilcoxon–Mann–Whitney test, as judged appropriate by normality testing. For serial measurements, we will test the change over time and the difference between the two groups over time using generalized linear mixed-effect models. These will be graphically represented. Unless otherwise specified, tests will be two-sided at 5% significance level. Analyses will be performed using the SAS software version 9.1.3 or higher (SAS Institute, Cary, NC, USA).

- B. *Sample size*: The study sample size of 2502 patients will have 80% power to detect a 5% absolute risk reduction in 90-day mortality from 30 to 25% [15].
- C. *Multiplicity*: We will use the false discovery rate (FDR) to adjust for multiple testing for secondary outcomes and subgroup analyses, each as a separate group, as described by Benjamini and Hochberg [27].
- D. *Analysis of primary outcome*: The primary outcome will be compared between the two groups using a generalized mixed effects model with adjustment to stratification variables [28, 29]. This approach of adjusting primary analysis for stratification variables has been suggested to avoid an unnecessary loss of power [28]. Results will be reported as risk difference (RD) and relative risk (RR) with 95% confidence intervals (CI) derived from the multivariable model with the maximum likelihood method. We will perform a secondary analysis using the Chi-square or Fisher's exact test. To address the missing primary outcomes (loss-to-follow-up), we will perform sensitivity analyses using a multiple imputations model, in which missing values of the primary outcome will be imputed using a fully conditional specification technique with 100 imputations. Primary outcome will be predicted based on age, sex, the trial site, the use of renal replacement therapy at the time of randomization, and whether the patient is a suspected or confirmed case of COVID-19. We will also use Cox proportional hazard model without and with adjustment to stratification variables as secondary analyses, censoring by the last follow-up date, and the results will be reported as hazard ratio (HR) and 95% CI (Supplementary Appendix 1-Table 3). The distributions of time to death will be compared using Kaplan–Meier survival curves and a log-rank test. Table 1 presents the summary of statistics that will be performed on the primary and secondary outcomes.
- E. *Analysis of secondary outcomes*: Secondary categorical outcomes will also be compared in the modified intention-to-treat cohort using a generalized mixed effects model with adjustment to stratification variables. Results will be reported as RDs, RRs, and 95% CIs. Continuous data such as the EQ-5D-5L index value, EQ-VAS, and SARC-F score collected 90 days post-randomization will also be analyzed using a linear regression model and van Elteren test as appropriate with adjustment to stratification variables. The results will be reported as medians and mean differences and beta coefficients with 95% CIs. Because data on EQ-5D-5L index value and EQ-VAS could be missing for some patients, we will conduct sensitivity analysis using multiple imputations. (Supplementary Appendix 1-Tables 4 and 5)
- F. *Protocol violations and serious adverse events*: Protocol violations and serious adverse events will be reported and compared between the two groups (Supplementary Appendix 1-Table 6).
- G. *Subgroup analyses*: Subgroup analysis will be performed for the primary outcome in the subgroups determined at baseline (Supplementary Appendix 1-Table 7). Results will be reported using RRs and 95% CIs, and the multivariable logistic regression will be used to report the results of tests of interactions for these subgroups. We will evaluate the effect of the intervention within the following subpopulations:
- Medical versus postoperative versus trauma
 - Admission diagnosis of sepsis versus no sepsis
 - Vasopressor use at the time of enrollment versus none
 - Acute kidney injury at enrollment (4 KDIGO groups: 0, 1, 2, 3)
 - Liver injury defined as AST or ALT at enrollment > 3 upper normal limit or bilirubin > 1.5 upper normal limit, which is consistent with hepatotoxicity stage 2 and above, according to the Cancer Therapy Evaluation Program of the National Cancer Institute (NCI) of the National Institutes of Health [30].
 - COVID-19 versus no COVID-19
 - BMI of ≤ 30 or > 30 kg/m.²
 - High nutritional risk defined as a NUTRIC score of 5–9 and low nutritional risk as a NUTRIC score of 0–4
 - SARC-F score of < 4 or ≥ 4
 - Day 4 SOFA stratified at a median value
- H. *Interim analyses*: Two interim analyses are planned to be conducted when 33% and 67% of the sample

size (2502 patients) are achieved. The study has two biostatisticians, one involved in study design and analysis and the other in generating a closed report with unblinded group data. The interim analysis will be conducted for the primary outcome and safety outcomes. We will consider a p -value of <0.01 for safety and a p -value of <0.001 for effectiveness as early stopping criteria. There will be no plans to terminate the trial for futility. One additional unplanned interim analysis was conducted (see Trial status below). We will use a group sequential α -spending function, calculated using the O'Brien–Fleming method, with two-sided symmetric bounds, and the final p -value will be considered at 0.0412, considering the three interim analyses (the two originally planned and the additional unplanned analysis).

- I. *Final analysis*: The final analysis will be conducted after the data on the 90-day mortality is completed [31].

Sub-studies

A. *REPLENISH-COVID sub-study*: We will evaluate the effect of high versus moderate protein on the subgroup of suspected or confirmed COVID-19 patients at enrollment. Critically ill patients with COVID-19 are in a state of high inflammation, increased stress, and catabolism. Poor oral intake, which may last 5 to 10 days before admission, is also common due to frequent coughing and breathlessness, dry mouth, and loss of taste and smell [32]. Long stay in the ICU, especially for intubated and ventilated patients, contributes to further malnutrition, loss of skeletal muscle mass, and disability. Though early and adequate enteral nutrition would be thought to mitigate these challenges and prevent gastrointestinal dysfunction [33, 34], it has the potential for adverse reactions like abdominal distention, diarrhea, regurgitation, and overfeeding [35]. Thus, the proper timing of optimal nutrients needed to meet the energy and protein requirements in critically ill patients with COVID-19 is debatable [35]. We will conduct a subgroup analysis based on COVID-19 status at baseline and assess the effect of protein intake on outcome. We will conduct a similar analysis to that of the main trial. We will conduct a sensitivity analysis using imputation to account for missing primary outcomes, if needed. In this model, missing values of the primary outcome variable will be imputed using a fully conditional specification multiple imputation technique with 100 imputations. Primary outcome values will be predicted from age, sex, the trial site, and the use of renal replacement therapy at the time

of randomization. Additional baseline laboratory tests, including ferritin, interleukin-6 (IL-6), lactate, and procalcitonin, if available, will be compared between the two groups. In suspected or confirmed COVID-19 patients, we will also compare the use of extracorporeal membrane oxygenation, inhaled nitric oxide, prone positioning, tracheostomy, intravenous immunoglobulins, and antiviral therapy (Supplementary Appendix 1-Table 8).

- B. *The effect of protein supplementation according to nutritional risk*: Malnutrition in critically ill patients is highly prevalent and associated with adverse clinical outcomes. Therefore, nutritional risk assessment is considered important to recognize high nutrition risk earlier and provide targeted nutritional therapy [36]. However, there is a lack of consensus regarding the definition of nutritional risk. The Nutrition Risk in Critically Ill (NUTRIC) score is the first nutritional risk assessment tool developed and validated specifically for ICU patients [37, 38]. The score includes age, APACHE II score, SOFA score, number of comorbidities, days from hospital admission to ICU admission, and IL-6. A modified version of the NUTRIC score, which excludes IL-6, has been validated in observational studies; the total score ranges from 0 to 9, with increasing scores indicating higher nutritional risk [39]. Based on this baseline score, we will conduct a pre-defined subgroup analysis on high versus low NUTRIC patients. Other nutritional risk indicators that will be used are prealbumin (prealbumin ≤ 0.10 g/L considered as an indicator of severe nutritional risk, 0.11–0.15 g/L as mild to moderate risk, and >0.15 g/L as no risk) [40, 41], serum albumin (35 g/L considered as a cutoff value), baseline urine urea nitrogen (using the median of the cohort as a cutoff value), baseline nitrogen balance (positive versus negative balance) [42], and SARC-F (1–3 versus ≥ 4). Some of these tests are not performed routinely, but we will not impute for missing nutritional risk indicators in this analysis.
- C. *The effect of protein supplementation across different BMI strata*: With obesity increasing worldwide, there is also a rise in the prevalence of obesity in patients admitted to the ICU. Despite being associated with comorbid conditions, obesity has no independent effect on the outcome of critical illness other than increased ICU length of stay and increased severity of illness [43]. On the other hand, underweight patients may have a higher risk of mortality, possibly due to inadequate nutritional reserves to compensate for the stress of critical illness [44]. Studies on the optimal dose and timing of enteral protein in critically ill

patients according to their BMI are scarce [45]. We will perform subgroup analyses stratified by BMI categories and evaluate the effect of protein intake on their outcomes. By definitions of the National Institutes of Health and World Health Organization, a person with a BMI < 18.5 kg/m² is underweight, 18.5 to 25 kg/m² has normal weight, 25 to 29.9 kg/m² is overweight, 30 to 39.9 kg/m² is obese, and ≥ 40 kg/m² is morbidly obese [46].

D. *Other analyses.* We will perform another analysis on patients who received corticosteroids (at any dose) during ICU stay and stratify them between high and low hydrocortisone-equivalent doses using a median cutoff of 300 mg to examine whether protein supplementation improves the outcome in these patients.

Additional details about the SAP are available in Supplementary Appendix 2.

Trial status

The first patient was enrolled in September 2020. As of January 2024, 1578 patients have been enrolled from 17 centers in Saudi Arabia and Kuwait. The first interim analysis was conducted on November 28, 2022, after a 1/3 accrual period when 833 patients had completed their 90-day outcome. In addition, an unplanned interim analysis was carried out on June 7, 2023, in response to the publication of the EFFORT-protein trial (high versus moderate protein), which found no difference in the primary outcome but a worse outcome in subgroups of patients with AKI and high SOFA [47]. On the advice of the Steering Committee and the DSMB, enrollment of patients with AKI (as defined in the EFFORT trial) was paused on February 2, 2023, with the recommendation to conduct an unplanned interim analysis that included subgroups by AKI and SOFA. After reviewing the data from the unplanned interim analysis, the DSMB recommended that the trial be continued with the same inclusion and exclusion criteria and procedures indicated in the protocol before restricting enrolment.

Discussion

The REPLENISH trial examines the effectiveness of supplemental protein (addition of supplemental enteral protein at 1.2 g/kg/day to the standard amount of protein (maximum 1.2 g/kg/day) from the primary formula) versus the standard amount of protein (maximum 1.2 g/kg/day) starting day 5 of ICU admission. It addresses a major evidence gap in critical care nutrition and will contribute to future clinical practice guidelines.

The SAP of REPLENISH trial described here specifies the statistical methods for evaluating primary and secondary outcomes and pre-defines the covariates for adjusted analyses and the procedures for dealing with missing data. Applying this SAP will facilitate unbiased analyses of clinical data and increase the robustness of its results and conclusions.

Abbreviations

RCT	Randomized clinical trial
CONSORT	Consolidated Standards of Reporting Trials
CI	Confidence interval
ICU	Intensive care unit
LOS	Length of stay
RR	Relative risk
SAP	Statistical analysis plan

Supplementary Information

The online version contains supplementary material available at <https://doi.org/10.1186/s13063-024-08105-w>.

Supplementary Material 1.

Supplementary Material 2.

Acknowledgements

We would like to thank the Data Safety Monitoring Board Chair and members:

Michelle Ng Gong, M.D, M.S.(Chair)

Professor of Medicine

Professor of Epidemiology and Population Health

Albert Einstein College of Medicine

Chief, Department of Medicine Division of Critical Care

Chief, Department of Medicine Division of Pulmonary Medicine

Director, Department of Medicine Critical Care Research

Montefiore Medical Center, Bronx, NY, USA

Manpreet Singh Mundi, MD (Member)

Professor, Department of Medicine,

Division of Endocrinology, Diabetes, Metabolism, and Nutrition

Mayo Clinic, Rochester, MN

USA

Christopher John Lindsell (Member)

Professor of Biostatistics and Biomedical Informatics

Director, Vanderbilt Institute for Clinical and Translational Research (VICTR)

Methods Program

Co-director, Vanderbilt Health Data Science (HEADS) Center

Nashville, TN

USA

Collaborators

The Saudi Critical Care Trials Group

King Abdulaziz Medical City, Riyadh: Yaseen M. Arabi, Hasan M. Al-Dorzi,

Abdulaziz Al-Dawood, Omar Al Dibaasi, Jesna Jose, Musharaf Sadat, Haifa

AlHumedi, Amal Almatroud

Brintha Naidu, Vicki Burrow, Salha Al Zayer, Haseena Banu Khan, Afonso Varela,

Maram Sakkijha, Norah Khalid Alamrey, Hatim Areshi, Samah Qahtani, Amro

Ghazi, Mohammed Moneer Hejazy

King Saud Medical City, Riyadh: Dina Muharib, Ahmed Mady, Mohammed

AlAqeely

Maha AlOtaibi, Mohamed Ali Alodat, Rayan Alshayeh, AbdulRehman AlHarthi,

Naif Al Qahtani, Yasmeen Ayed AlHejely, Mada Muzhir AlZahrani, Mohammed

Haddad Lhmdi, Nouf AlBakhiet

Katrina Baguisa, Huda Mhawish

King Abdulaziz university hospital, Jeddah: Haifa AlGhethamy, Saleh T Baaziz,

Abeer Othman Azhar, Sara Fahad Alabbas, Liyakat Khan, Moataz Gabr, Shehla

Nuzhat

King Abdulaziz Medical City, Jeddah: Dr. Fahad Al-Hameed, Dr. Gulam Rasool,

Ohoud Al Orabi, Raghad Malabari, Kholoud Shobragi, Shaymaa Asaas

Prince Sultan Military Medical City: Adnan AlGhamdi, Ghaleb A. AlMekhlafi, Rabeah Hamad Alhutail, Madiha ElGhannam, Beverly Bcuizon, Bander AlAnezi, Christine Joy Anaoud
 Assir Central Hospital, Abha: Ali Al Bshabshe, Munir AlDammad, Yahia Otaif, Osama Hakami
 King Abdulaziz Hospital, Ahsa: Jamal Chalabi, Arwa AlHusseini, Shahinaz Bashir
 King Fahad Medical City: Dr. Mohammed Almaani
 King Faisal Specialist Hospital and Research Center, Jeddah: Khalid Al Ghamdi, Lama Hefni
 Samahar Alamoudi, Milyn L Ansing
 King Faisal Specialist Hospital and Research Center, Riyadh: Khalid Maghrabi, Sawsan Albalawi, Manar Alahmadi, Mohammed AlHumaid, Samar Talal Nouri, Rozeena Huma
 Khawla Farhan
 Ohoud Hospital, Al-Madinah Al-Monawarah, Saudi Arabia: Ayman Kharaba, Mohamed Hussein, Kaouthar Sifaoui, Olfa Baji, Abdulrehman Alerw, Khloud Johani, Monera AlEnezi
 Ismail Boudrar, Rabiah Atiq, Maali Junid, Maram Yusef
 Al-Amiri Hospital, Ministry of Health, Kuwait: Abdulrahman A Al-Fares, Alia Al-Mutawa
 Prince Mohammed bin Abdulaziz Hospital, Madinah, Saudi Arabia: Ahmad S Qureshi
 Ahmed Quadri, Khalid Idrees
 Jaber Al-Ahmed Al-Sabah Hospital Kuwait: Sarah Fadel Buabbas, Jumana Hani AlMubarak
 King Saud University, Riyadh, Saudi Arabia: Rakan Alqahtani, Mona Bin Mabkoot
 Jaber Al-Ahmed Al-Sabah Hospital, Kuwait: Sarah Adel Buabbas, Jumanna AlMubarak
 Prince Mohammed bin Abdulaziz hospital, Riyadh, Saudi Arabia: Wadiyah Alawi Al Fifi, Wafa Mansoor M Hazem, AbdulRehman Fahad alkraidees,
 King Fahad Hospital of the University, Imam Abdulrahman Bin Faisal University, Al Khobar, Kingdom of Saudi Arabia: Mohammed S. Alshahrani, Talal Albrahim, Laila Perlas Asonto
 Erasme University Hospital, Brussels, Belgium: Jean-Charles Preiser
 University of Tartu, Estonia: Joel Starkopf
 University of Copenhagen, Denmark: Anders Perner

Authors' contributions

YA is the chief investigator and contributed to the conception, design, and development of the protocol, analytical plan, drafting, and critical revision of the manuscript for important and intellectual content. HMD, OD, MS, JJ, DM, HG, FH, AM, AG, GM, AF, AK, AB, KM, KG, GR, JC, HIA, MHS, NA, AA, RH, KS, MA, RQ, AQ, MH, HA, SQ, AG, SB, AO, SF, MA, OA, AAM, MO, SFB, WAF, JS, JCP, AP, JHA, WH, MAS, and AD contributed to the development of the protocol and critical revision of the manuscript for important intellectual content. All authors read and approved the final manuscript.

Funding

The study is sponsored by King Abdullah International Medical Research Center, Ministry of National Guard Health Affairs MNGHA (Grant no: RC19/414R), Riyadh, Saudi Arabia. The study sponsor does not have any role in the study design, collection, management, and interpretation of the data or preparation, review, or approval of the manuscript or decision to submit the manuscript for publication.

Availability of data and materials

The data that will support the findings of this study are available from the corresponding author upon reasonable request as per the regulations of King Abdullah International Medical Research Center (KAIMRC).

Declarations

Ethics approval and consent to participate

The study has been approved by the Institutional Review Board (IRB) of the Ministry of National Guard Health Affairs (MNGHA) and the other centers' respective Institutional Review Boards.

Consent for publication

Not applicable.

Competing interests

The authors declare that they have no competing interests.

Author details

¹Intensive Care Department, King Abdulaziz Medical City, Ministry of National Guard Health Affairs, King Abdullah International Medical Research Center, ICU, College of Medicine, King Saud Bin Abdulaziz University for Health Sciences, Riyadh, Saudi Arabia. ²King Abdullah International Medical Research Center, King Saud Bin Abdulaziz University for Health Sciences, Riyadh, Saudi Arabia. ³Intensive Care Department, King Saud Medical City, Riyadh, Saudi Arabia. ⁴Department of Anesthesia and Critical Care, King Abdulaziz University, King Abdulaziz University Hospital, Jeddah, Saudi Arabia. ⁵Department of Anesthesia, Critical Care Medicine and Pain Medicine, Al-Amiri Hospital, Ministry of Health, Kuwait City, Kuwait. ⁶Intensive Care Department, King Abdulaziz Medical City, Ministry of National Guard Health Affairs, King Abdullah International Medical Research Center, King Saud Bin Abdulaziz University for Health Sciences, Jeddah, Saudi Arabia. ⁷Department of Anesthesiology and Surgical Intensive Care, Tanta University Hospitals, Tanta, Egypt. ⁸Pulmonary & Critical Care Departments, King Fahad Hospital, Critical Care Units- Madinah Region, Ministry of Health, Madinah, Saudi Arabia. ⁹Department of Critical Care Medicine, Aseer Central Hospital, King Khalid University, Abha, Saudi Arabia. ¹⁰Internal Medicine, Critical Care, King Faisal Specialist Hospital and Research Centre, Riyadh, Saudi Arabia. ¹¹Internal Medicine, Critical Care, King Faisal Specialist Hospital and Research Centre, Jeddah, Saudi Arabia. ¹²Department of Intensive Care Services, Prince Sultan Military Medical City, Riyadh, Saudi Arabia. ¹³Intensive Care Department, King Salman Bin Abdulaziz Medical City, Madinah, Saudi Arabia. ¹⁴Intensive Care Department, King Abdulaziz Medical City, King Abdullah International Medical Research Center, AlAhsa Ministry of National Guard Health Affairs, King Saud Bin Abdulaziz University for Health Sciences, Riyadh, Saudi Arabia. ¹⁵Department of Critical Care, College of Medicine, King Saud University, Riyadh, Saudi Arabia. ¹⁶Intensive Care Department, Prince Mohammed Bin Abdulaziz Hospital, Ministry of National Guard Health Affairs, King Abdullah International Medical Research Center, King Saud Bin Abdulaziz University for Health Sciences, Madinah, Saudi Arabia. ¹⁷Adult Critical Care Services, King Fahad Medical City, Riyadh, Saudi Arabia. ¹⁸Department of Anesthesia, Critical Care and Pain Medicine, Jaber Al-Ahmed Al-Sabah Hospital, Kuwait City, Kuwait. ¹⁹Department of Intensive Care, Prince Mohammed Bin Abdulaziz Hospital, Riyadh, Saudi Arabia. ²⁰Department of Emergency and Critical Care, King Fahad Hospital of the University, Imam Abdulrahman Bin Faisal University, Al Khobar, Saudi Arabia. ²¹Clinic of Anaesthesiology and Intensive Care, University of Tartu, Tartu University Hospital, Tartu, Estonia. ²²Department of Intensive Care, Erasme University Hospital, Brussels, Belgium. ²³Department of Intensive Care, Rigshospitalet, University of Copenhagen, Copenhagen, Denmark.

Received: 18 February 2023 Accepted: 10 April 2024

Published online: 02 May 2024

References

- McClave SA, Taylor BE, Martindale RG, Warren MM, Johnson DR, Braunschweig C, McCarthy MS, Davanos E, Rice TW, Cresci GA, et al. Guidelines for the provision and assessment of nutrition support therapy in the adult critically ill patient: Society of Critical Care Medicine (SCCM) and American Society for Parenteral and Enteral Nutrition (A.S.P.E.N.). *JPEN J Parenter Enteral Nutr.* 2016;40(2):159–211.
- Hoffer LJ, Bistrian BR. Appropriate protein provision in critical illness: a systematic and narrative review. *Am J Clin Nutr.* 2012;96(3):591–600.
- Weijs PJ, Stapel SN, de Groot SD, Driessen RH, de Jong E, Girbes AR, van Strack Schijndel RJ, Beishuizen A. Optimal protein and energy nutrition decreases mortality in mechanically ventilated, critically ill patients: a prospective observational cohort study. *JPEN J Parenter Enteral Nutr.* 2012;36(1):60–8.
- Nicolo M, Heyland DK, Chittams J, Sammarco T, Compher C. Clinical outcomes related to protein delivery in a critically ill population: a multicenter, multinational observation study. *JPEN J Parenter Enteral Nutr.* 2016;40(1):45–51.
- Compher C, Chittams J, Sammarco T, Nicolo M, Heyland DK. Greater protein and energy intake may be associated with improved mortality in

- higher risk critically ill patients: a multicenter, multinational observational study. *Crit Care Med*. 2017;45(2):156–63.
6. Casaer MP, Wilmer A, Hermans G, Wouters PJ, Mesotten D, Van den Bergh G. Role of disease and macronutrient dose in the randomized controlled EPaNIC trial: a post hoc analysis. *Am J Respir Crit Care Med*. 2013;187(3):247–55.
 7. Thiessen SE, Derde S, Derese I, Dufour T, Vega CA, Langouche L, Goossens C, Peersman N, Vermeersch P, Vander Perre S, et al. Role of glucagon in catabolism and muscle wasting of critical illness and modulation by nutrition. *Am J Respir Crit Care Med*. 2017;196(9):1131–43.
 8. Arabi YM, Al-Dorzi HM, Mehta S, Tamim HM, Haddad SH, Jones G, McIntyre L, Solaiman O, Sakkijha MH, Sadat M, et al. Association of protein intake with the outcomes of critically ill patients: a post hoc analysis of the PermiT trial. *Am J Clin Nutr*. 2018;108(5):988–96.
 9. Bendavid I, Zusman O, Kagan I, Theilla M, Cohen J, Singer P. Early administration of protein in critically ill patients: a retrospective cohort study. *Nutrients*. 2019;11(1):106.
 10. Derde S, Vanhorebeek I, Guiza F, Derese I, Gunst J, Fahrenkrog B, Martinet W, Vervenne H, Ververs EJ, Larsson L, et al. Early parenteral nutrition evokes a phenotype of autophagy deficiency in liver and skeletal muscle of critically ill rabbits. *Endocrinology*. 2012;153(5):2267–76.
 11. Hadda V, Chawla G, Tiwari P, Madan K, Khan MA, Mohan A, Khilnani GC, Guleria R. Noninvasive ventilation for acute respiratory failure due to non-cystic fibrosis bronchiectasis. *Indian J Crit Care Med*. 2018;22(5):326–31.
 12. Ergon B, Nasilowski J, Winck JC. How should we monitor patients with acute respiratory failure treated with noninvasive ventilation? *Eur Respir Rev*. 2018;27(148):170101.
 13. Moher D, Hopewell S, Schulz KF, Montori V, Gotsche PC, Devereaux PJ, Elbourne D, Egger M, Altman DG. CONSORT 2010 explanation and elaboration: updated guidelines for reporting parallel group randomised trials. *BMJ*. 2010;340:c869.
 14. Schulz KF, Altman DG, Moher D, Group C. CONSORT 2010 statement: updated guidelines for reporting parallel group randomised trials. *BMJ*. 2010;340:c332.
 15. Arabi YM, Al-Dorzi HM, Sadat M, Muharib D, Algethamy H, Al-Hameed F, Mady A, AlGhamdi A, Almekhlafi GA, Al-Fares AA, et al. Replacing protein via enteral nutrition in a stepwise approach in critically ill patients: the REPLENISH randomized clinical trial protocol. *Trials*. 2023;24(1):485.
 16. Fergusson D, Aaron SD, Guyatt G, Hebert P. Post-randomisation exclusions: the intention to treat principle and excluding patients from analysis. *BMJ*. 2002;325(7365):652–4.
 17. Knaus WA, Draper EA, Wagner DP, Zimmerman JE. APACHE II: a severity of disease classification system. *Crit Care Med*. 1985;13(10):818–29.
 18. Malmstrom TK, Morley JE. SARC-F: a simple questionnaire to rapidly diagnose sarcopenia. *J Am Med Dir Assoc*. 2013;14(8):531–2.
 19. Early mobility guide for reducing ventilator-associated events in mechanically ventilated patients. <https://www.ahrq.gov/hai/tools/mvp/technical-bundles-early-mobility.html>, last accessed on 30.05.2022.
 20. Herdman M, Gudex C, Lloyd A, Janssen M, Kind P, Parkin D, Bonsel G, Badia X. Development and preliminary testing of the new five-level version of EQ-5D (EQ-5D-5L). *Qual Life Res*. 2011;20(10):1727–36.
 21. van Hout BA, Shaw JW. Mapping EQ-5D-3L to EQ-5D-5L. *Value Health*. 2021;24(9):1285–93.
 22. Kellum JA, Lameire N, Aspelin P, Barsoum RS, Burdmann EA, Goldstein SL, Herzog CA, Joannidis M, Kribben A, Levey AS. Kidney disease: improving global outcomes (KDIGO) acute kidney injury work group. KDIGO clinical practice guideline for acute kidney injury. *Kidney Int Suppl*. 2012;2(1):1–138.
 23. CDC definitions of healthcare-associated infections: [http://www.cdc.gov/nhsn/PDFs/pscManual/17pscNosInfDef_current.pdf], last accessed on 30.05.2022.
 24. Reintam Blaser A, Malbrain ML, Starkopf J, Fruhwald S, Jakob SM, De Waele J, Braun JP, Poeze M, Spies C. Gastrointestinal function in intensive care patients: terminology, definitions and management. Recommendations of the ESICM working group on abdominal problems. *Intensive Care Med*. 2012;38(3):384–94.
 25. Doig GS, Simpson F, Heighes PT, Bellomo R, Chesher D, Cateson ID, Reade MC, Harrigan PW. Refeeding Syndrome Trial Investigators G: Restricted versus continued standard caloric intake during the management of refeeding syndrome in critically ill adults: a randomised, parallel-group, multicentre, single-blind controlled trial. *Lancet Respir Med*. 2015;3(12):943–52.
 26. Marik PE, Bedigian MK. Refeeding hypophosphatemia in critically ill patients in an intensive care unit A prospective study. *Arch Surg*. 1996;131(10):1043–7.
 27. Benjamini Y, Hochberg Y. Controlling the false discovery rate: a practical and powerful approach to multiple testing. *J Roy Stat Soc: Ser B (Methodol)*. 1995;57(1):289–300.
 28. Kahan BC, Morris TP. Reporting and analysis of trials using stratified randomisation in leading medical journals: review and reanalysis. *BMJ*. 2012;345:e5840.
 29. Kahan BC, Harhay MO. Many multicenter trials had few events per center, requiring analysis via random-effects models or GEEs. *J Clin Epidemiol*. 2015;68(12):1504–11.
 30. LiverTox: clinical and research information on drug-induced liver injury. Severity grading in drug induced liver injury. <https://www.ncbi.nlm.nih.gov/books/NBK548241/> Accessed 3 Jan 2024.
 31. PennState. Frequentist methods: O'Brien-Fleming, Pocock, Haybittle-Peto. <https://online.stat.psu.edu/stat509/lesson/9/9.5>. Accessed 3 Jan 2024.
 32. Ojo O, Ojo OO, Feng Q, Boateng J, Wang X, Brooke J, Adegboye ARA. The effects of enteral nutrition in critically ill patients with COVID-19: a systematic review and meta-analysis. *Nutrients*. 2022;14(5):1120.
 33. Hu Y, Li X, Gong W. [Nutritional support for critically ill patients with COVID-19]. *Zhejiang Da Xue Xue Bao Yi Xue Ban*. 2020;49(3):347–55 *Journal of Zhejiang University Medical sciences*.
 34. Delaney E. Nutritional care in relation to COVID-19. *Br J Nurs*. 2020;29(19):1096–103.
 35. Puthucherry ZA, Rice TW. Nutritional priorities in patients with severe COVID-19. *Curr Opin Clin Nutr Metab Care*. 2022;25(4):277–81.
 36. Martindale RG, McClave SA, Vanek VW, McCarthy M, Roberts P, Taylor B, Ochoa JB, Napolitano L, Cresci G, American College of Critical Care M, et al. Guidelines for the provision and assessment of nutrition support therapy in the adult critically ill patient: Society of Critical Care Medicine and American Society for Parenteral and Enteral Nutrition: executive summary. *Crit Care Med*. 2009;37(5):1757–61.
 37. Chourdakis M, Grammatikopoulou MG, Day AG, Bouras E, Heyland DK. Are all low-NUTRIC-score patients the same? Analysis of a multi-center observational study to determine the relationship between nutrition intake and outcome. *Clin Nutr*. 2019;38(6):2783–9.
 38. Heyland DK, Dhaliwal R, Jiang X, Day AG. Identifying critically ill patients who benefit the most from nutrition therapy: the development and initial validation of a novel risk assessment tool. *Crit Care*. 2011;15(6):R268.
 39. Rahman A, Hasan RM, Agarwala R, Martin C, Day AG, Heyland DK. Identifying critically-ill patients who will benefit most from nutritional therapy: further validation of the “modified NUTRIC” nutritional risk assessment tool. *Clin Nutr*. 2016;35(1):158–62.
 40. Shenkin A. Serum prealbumin: is it a marker of nutritional status or of risk of malnutrition? *Clin Chem*. 2006;52(12):2177–9.
 41. Mears E. Outcomes of continuous process improvement of a nutritional care program incorporating serum prealbumin measurements. *Nutrition*. 1996;12(7–8):479–84.
 42. Bechard LJ, Parrott JS, Mehta NM. Systematic review of the influence of energy and protein intake on protein balance in critically ill children. *J Pediatr*. 2012;161(2):333–339 e331.
 43. Lim SY, Kim SI, Ryu YJ, Lee JH, Chun EM, Chang JH. The body mass index as a prognostic factor of critical care. *Korean J Intern Med*. 2010;25(2):162–7.
 44. Tremblay A, Bandi V. Impact of body mass index on outcomes following critical care. *Chest*. 2003;123(4):1202–7.
 45. Al-Dorzi HM, Stapleton RD, Arabi YM. Nutrition priorities in obese critically ill patients. *Curr Opin Clin Nutr Metab Care*. 2022;25(2):99–109.
 46. Peake SL, Moran JL, Ghelani DR, Lloyd AJ, Walker MJ. The effect of obesity on 12-month survival following admission to intensive care: a prospective study. *Crit Care Med*. 2006;34(12):2929–39.
 47. Heyland DK, Patel J, Compber C, Rice TW, Bear DE, Lee ZY, Gonzalez VC, O'Reilly K, Regala R, Wedemire C, et al. The effect of higher protein dosing in critically ill patients with high nutritional risk (EFFORT Protein): an international, multicentre, pragmatic, registry-based randomised trial. *Lancet*. 2023;401(10376):568–76.

Publisher's Note

Springer Nature remains neutral with regard to jurisdictional claims in published maps and institutional affiliations.